



2508 Northeast 138th Avenue  
 Vancouver, WA 98684  
 Phone: (360) 253-5658  
 Fax: (360) 253-4657

Email: [pm.cascadewoods.wa@riverstoneres.com](mailto:pm.cascadewoods.wa@riverstoneres.com)  
<http://www.cascadewoodsapts.com>



➤ **DIRECTIONS FROM I-205:**

- Take Mill Plain Blvd exit.
- Go east on SE Mill Plain Blvd.
- Turn left (N) on SE 136th Avenue (after about 1 mi.)
- SE 136th turns into SE 138th Avenue
- Cascade Woods Apartments will be on your left (after about 1.5 mi.)



**UNITS FEATURE:**

- Private Garage Available Near Your Front Door
- Large 2 Bedroom and 3 Bedroom Floor Plans
- Side-by-Side Washer/Dryer Connection & Washer/Dryer Available
- Individual Water Heater
- Covered Exterior Staircases.
- Covered Private Patio or Balcony
- Private Ground Floor Storage Available
- Kitchens have Generous Cabinet and Counter Space, with Breakfast Bar
- Frost-Free Refrigerator, Dishwasher, Electric Range
- Wall to Wall Carpeting, Vertical Blinds & Mini Blinds
- Energy Saving Dual Pane Windows
- Cable Ready, High Speed Internet Available
- Income Restrictions Apply

**AMENITIES:**

- Beautiful Park-like Setting, with Grassy Open Spaces
- Professional On-Site Management & Maintenance (i.e. Emergency Maintenance)
- New Fitness Center
- Two Playgrounds
- Soccer Court
- New Clubhouse with WIFI access
- Package Receiving

**LOCATION:**

- Preferred Cascade Park Neighborhood Location
- Convenient Access of I-205 Freeway
- Walking Distance to Shopping, Restaurants, Entertainment & Services
- Vancouver Mall accessible on C-Tran #80 Route
- Evergreen School District
  - Burton Elementary School - 1 block away
  - Cascade Middle School - 1 blocks away
  - Evergreen High School - 2 blocks away
- The Firstenberg Community Center & Cascade Park Community Library are located w/ in walking distance & along the C-Tran #80 Bus Line, which stops 1 block away

# MONTHLY RENTAL CHARGES

Rent 2x1: \$  
 Rent 3x2: \$  
 Garage Rent: \$  
 Storage Rent: \$

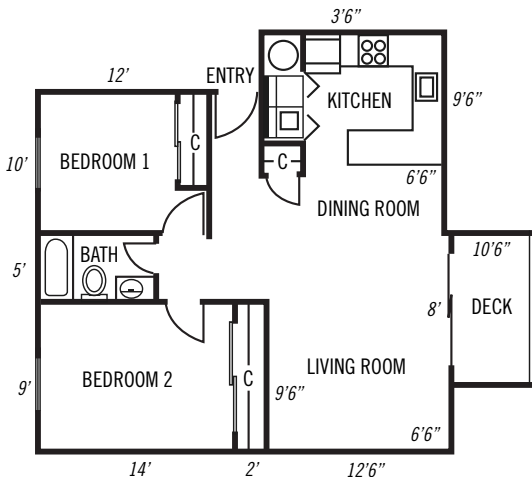
# MOVE-IN COST

Application Fee (Non-Refund.): \$  
 Security Deposit: \$  
 Available For Move-in:  
 Agent:

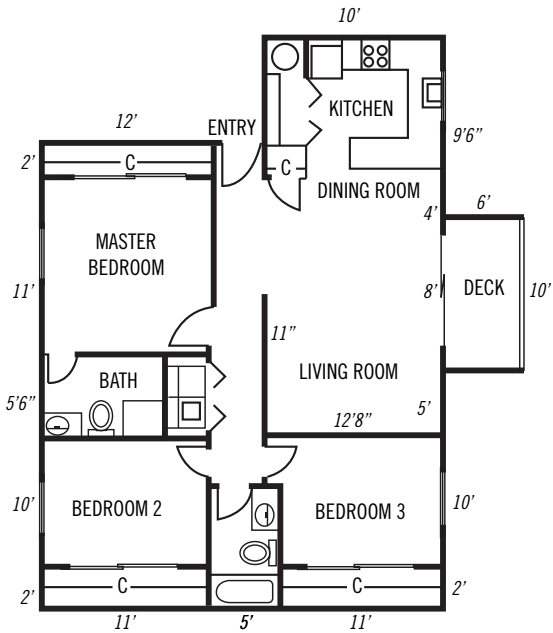
# SITE PLAN



# FLOORPLANS



2 Bedrooms • 858 sq ft to 870 sq ft



3 Bedrooms & 2 Bathrooms • 1132 sq ft